

# OSHA Safety Cornerstones Newsletter

A newsletter of practical compliance and safety tips provided by Millhiser Smith Agency, Inc.

## IN THIS ISSUE

- OSHA Issues New Recordkeeping and Reporting Requirements
- Ebola Not a Threat to Most U.S. Workers, But Employers Must Protect Workers From Exposure
- OSHA extends compliance date for crane operator certifications
- New Jersey company fined for exposing employees to hazards
- Florida residential construction companies fined \$355,300 for 12 violations
- OSHA launches fall prevention initiative for maritime industry

## OSHA Issues New Recordkeeping and Reporting Requirements

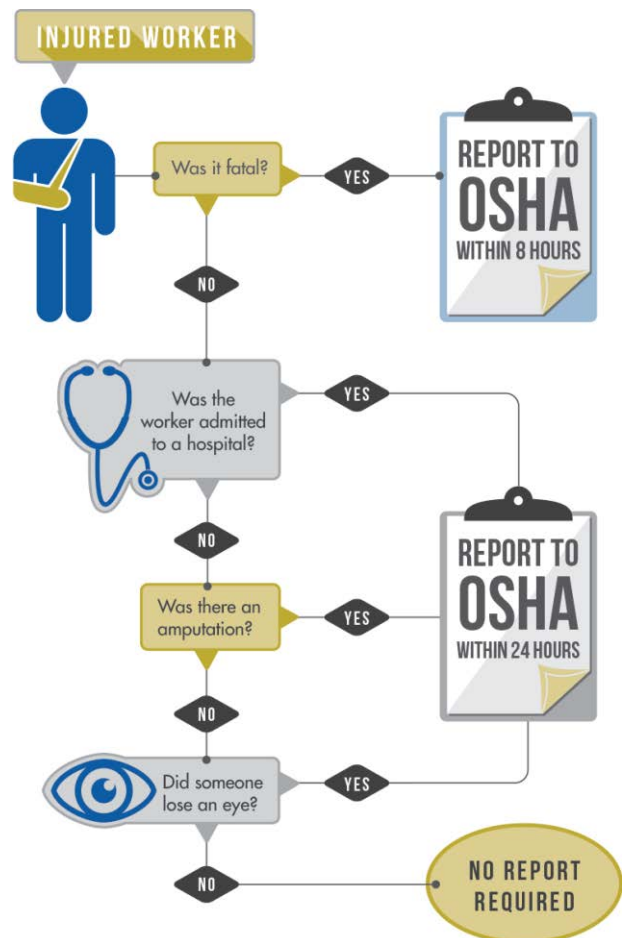
In early September, the Occupational Safety and Health Administration (OSHA) announced a final rule that requires employers to notify OSHA within eight hours after an employee is killed on the job. The rule also requires notification within 24 hours when an employee suffers a work-related hospitalization, amputation or loss of an eye.

The previous regulations only required notification of work-related fatalities and inpatient hospitalizations of three or more employees.

OSHA has also updated the list of industries that are exempt from the requirement to regularly keep injury and illness records. The industries are exempt due to having relatively low occupational injury and illness rates.

Details of the new requirements and the list of exempt industries can be found at [www.osha.gov/recordkeeping2014](http://www.osha.gov/recordkeeping2014).

Use the flowchart on the right to help you understand how the new rule will affect your reporting requirements.



## Ebola Not a Threat to Most U.S. Workers, But Employers Must Protect Workers From Exposure

The recent Ebola outbreak in West Africa has many people fearing that the disease will become a global pandemic. However, despite the destructive nature of the virus, it is currently not a threat to most American workers. Employers are responsible for ensuring that workers are protected from exposure to Ebola and that they are not exposed to harmful levels of chemicals used for cleaning and disinfection. OSHA has recently issued guidelines for employers in non-health care/non-laboratory settings to follow in order to safely clean and decontaminate surfaces where Ebola can be found.

- Immediately clean and disinfect any visible surface contamination from blood, urine, feces, vomit or other body fluids that may contain the Ebola virus.
- Isolate areas of suspected Ebola virus contamination until decontamination is completed in order to minimize exposure to individuals not performing the work.
- Cover spills with absorbent material (e.g., paper towels), then pour disinfectant on to saturate the area and allow bleach to soak into spills for at least 30 minutes before cleaning to allow it to kill any virus or other infectious agents that may be present.
- Ensure adequate ventilation in areas where workers are using disinfectants by opening windows and doors or using mechanical ventilation equipment.
- Employers must ensure that they comply with OSHA's Bloodborne Pathogens Standard, 29 CFR 1910.1030, to protect workers who may be exposed to blood or other potentially infectious materials.

For more information, see OSHA's Ebola fact sheet at [www.osha.gov/Publications/OSHA\\_FS-3756.pdf](http://www.osha.gov/Publications/OSHA_FS-3756.pdf).



## Safety Cornerstones Newsletter

Millhiser Smith Agency, Inc.  
PO Box 3100  
Cedar Rapids, IA 52406-3100  
319-365-8611  
<http://www.millhisersmith.com/>

## OSHA extends compliance date for crane operator certifications

The deadline for crane operator certification requirements in the Cranes and Derricks in Construction final rule has been extended by three years to Nov. 10, 2017. The rule also extends—by three years—the employer's responsibility to ensure that crane operators are competent to operate a crane safely. The final rule becomes effective Nov. 9, 2014.

The final cranes and derricks rule required crane operators on construction sites to meet one of four qualification/certification options by Nov. 10, 2014. After publishing the final rule, a number of parties raised concerns about the standard's requirement to certify operators by type and capacity of crane, and they questioned whether crane operator certification was sufficient for determining whether an operator could operate equipment safely on a construction site.

## New Jersey company fined \$136,290 for exposing workers to cancer-causing chemical and other hazards

A Somerville, N.J., custom-order cabinetry company was cited by OSHA for exposing workers to safety and health hazards, including methylene chloride. OSHA inspected Choice Cabinetry LLC and cited the company for 15 violations with proposed penalties of \$136,290.

Methylene chloride is a volatile, colorless liquid with a chloroform-like odor that OSHA considers to be a potential occupational carcinogen.

The company was also fined for not having a hazard communication program, hazard communication training or methylene chloride training.

## Florida residential construction companies fined \$355,300 for 12 violations

GP Roofing & Construction LLC (GP) and Archer Exteriors Inc. were cited by OSHA for 12 safety violations for exposing workers to falls and other hazards at two residential work sites. The two companies subcontracted with one another to install shingles at three locations.

An inspection found that GP failed to provide workers with fall protection systems, which exposed them to falls from heights of 9 to 11 feet while they performed roofing work at the three job sites.

Archer Exteriors was cited \$15,400 for allowing GP employees to install flashing at heights of more than 10 feet without fall protection.

## OSHA launches fall prevention initiative for maritime industry

A new fall prevention initiative to protect maritime workers has been developed by OSHA and the Puget Sound Shipbuilders Association, in conjunction with the Naval Sea Systems Command of the United States Navy and the Puget Sound Naval Shipyard. The new maritime program mirrors OSHA's fall protection campaign for the construction industry, modified for the additional risks and different environmental factors of working over water.

© 2014 Zywave, Inc. All rights reserved. This publication is for informational purposes only. It is not intended to be exhaustive nor should any discussion or opinions be construed as compliance or legal advice.